

致力于打造创新产业园及新型城镇化全案运营服务商

中成致力于成为全产业链、全过程、一体化的专业服务提供商，为产业地产、各类园区、地方政府等提供一系列专业配套服务，公司立足长三角经济带为中心，辐射淮海经济圈，全面推动《长江三角洲世界级城市群》协同发展的战略机遇，坚持以“产业升级、城市更新、产城融合、新型城镇化”为发展主线，以多元化的产业为抓手，充分运用市场化的机制，通过区域资源整合、科技创新、要素配置助力城市产业经济的持续升级发展。

■ 产业园区
■ 新型城镇化
■ 文旅产业
■ 国际科创基地



中成创源（上海）文化发展有限公司
Zhongcheng Innovative Origin Cultural Development Co., Ltd.
Address: 上海市宝山区长江路258号A1栋
Building A1, No.258 Changjiang Road, Baoshan District, Shanghai, China
Tel: +86-21-65751314 Web: www.zccysh.com

International New Landscape 國際新景觀

River-Viewing Facility 河道景觀

JAN. / FEB. / MAR. 2020 No.1

81

Volume 15

International new landscape 國際新景觀

01/02/03 2020 No.1 Price: USD 30 / RMB 87

Topic 專題

River-Viewing Facility 河道景觀



Contents

目錄

景觀新干綫 News

002 歐洲最新行業動態
Europe

004 亞洲最新行業動態
Asia

卷首語 Editor's Note

005 觀河自在
River-Viewing Towards Unrestraint

專題 Topic

006 荷蘭諾瓦德圩田橋梁和泵站
The Bridges and Pumping Stations of Noordwaard

014 潮汐
The Tide

030 觀景臺
View Terrace

景觀規劃 Planning

038 Nong Fab液化天然氣接收站
Nong Fab LNG Terminal

景觀實踐 Practice

048 高槻市住宅改建
House in Takatsuki

054 人民公館：100%借來的場館
People's Pavilion: 100% Borrowed

062 ReBar自由空間
ReBar

068 日本猿倉山啤酒釀造所
Sarukurayama Brewery

景觀設計師 Landscape Architects

074 簡單却具有影響力的設計
——Francis景觀設計公司
Simple But Strong Design
——Francis Landscapes

★ 所有人名按字母順序排列 Name in alphabetical order

Publisher X-Color Publishing International

Distributor Yutong Culture Media

Committee Adriaan Geuze Didzis Jaunzems Edzo Bindels Frederic Francis
Hideo Kumaki Janet Gaskins John Newman Kevin Rice Martin Biewenga
Peter van Assche Shogo Aratani Tawatchai Kobkaikit

Contributing Editors Adele Charlebois Asta Kat Chika Muto Christine Noblejas
Didzis Jaunzems Han Jingjing Nantawan Sirisup
Stephanie Kowalski Winnie Poon

Editor-in-Chief 石瑩 Erica

President 林佳藝 Rita

English Editor 王雅敏 Shirley

Art Editor 楊翠微 Vivian

Distributing Manager 宋俊 Nancy

Cover Photo 封面圖片提供
Eriks Bozis

ISSN 1833-0673

Publishing Date 季度 Every Quarter

Price Per Issue USD 30 RMB 87

Chinese Office

上海市寶山區長江路258號A1棟2F
2F, Building A1, No.258 Changjiang Road, Baoshan
District, Shanghai

Tel / Fax: 86-21-65751314/65751814

E-mail: info@internationalnewlandscape.com

URL: www.internationalnewlandscape.com

Cooperative Company 協辦單位

上海市園林設計研究總院有限公司

Membership Companies & Associations 成員單位

American Society of Landscape Architects ASLA

深圳市萬鴻環境藝術設計有限公司

Weibo 微博 國際新景觀

Wechat 微信 訂閱號：國際新景觀 inl-inl

服務號：設計傳媒 design-media

Web 網址 設計傳媒 www.design-media.cn

www.internationalnewlandscape.com

Media Link 媒體支持

设计传媒.cn
design-media.cn

Membership Companies & Associations 成員單位

Private plots & public spots

綠圖景觀

Subscription Online 本書網絡訂閱





Photo by Filip Dujardin

PEOPLE'S PAVILION

Bureau SLA & Overtreders W

100% BORROWED | 人民公館：100%借來的場館 |

總平面圖 Site Plan

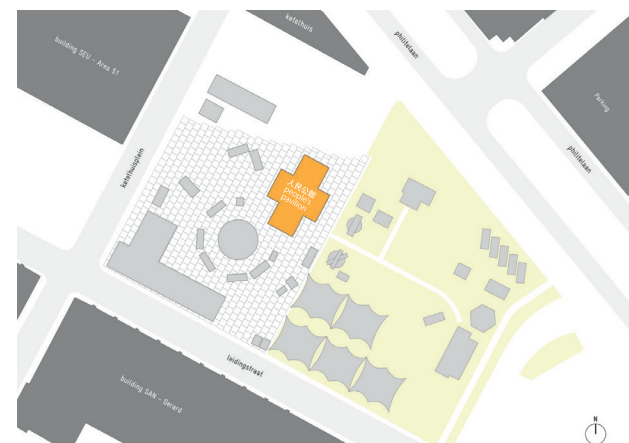


Photo by Filip Dujardin



Photo by Filip Dujardin

每年10月，北歐最大型、最重要的設計活動「荷蘭設計周（DDW）」在荷蘭埃因霍溫舉行。2017年，荷蘭設計周和埃因霍溫城市設計（Design City Eindhoven）共同發起了第一屆世界設計活動（WDE），為世界各地的未來創造者提供了一個平臺。荷蘭設計周的核心項目是人民公館，由SLA事務所和Overtreders W公司共同設計。

該場館是新型循環經濟的一種設計展示，也是一個100%循環利用的建築，其建造過程中沒有浪費任何材料。SLA事務所和Overtreders W公司的設計師用一種全新的方式完成了這個項目：這棟250m²大樓的全部建築材料都是借來的。材料

不僅來自傳統供應商和生產商，也來自埃因霍溫當地的居民。需要明確的是，借來的材料占比不是70%、80%甚至95%，而是100%：混凝土和木質橫梁、照明、立面材料、可再生塑料覆層，甚至是場館的玻璃屋頂，都在荷蘭設計周結束時，被完好無損地拆除并還給所有者。只有一種材料例外，那就是場館的上層立面材料——由當地居民的家庭塑料廢品制成的色彩鮮艷的磚片，它們被贈送給材料提供者當作紀念。

100%借用意味着施工現場沒有任何螺絲、膠水、鑽頭或鋸子，繼而帶來了一種新的設計語言，同時也揭示了可持續建築的全新未來：一種結合了新型合作方式和智能施工方法的強大設計。

建造中 In Process





Photo by Filip Dujardin

項目介紹

人民公館是世界設計活動的主要場館，既用于會議和參觀，也用作音樂會場和劇院。場館計劃維持兩個星期，晝夜開放，用于舉辦各種活動，比如“仙境時代”、“TEDx試講”、“創造你的世界”讀書會、“氣候行動”辯論等。場館可以容納200坐席或600站席，且無需入場券向所有人開放。

設計概述

人民公館的地基由12根混凝土地基樁和19個木框架組成，且

Arup公司也參與了合作設計。木框架由未刨平的標準規格木梁組成，并由鋼帶固定。混凝土樁和木框架由350個張力帶連接，構成了這棟250m²大樓8米高的基本結構。玻璃屋頂借鑒了溫室的建造手法。人民公館的上層立面布滿色彩鮮艷的塑料磚片，這些磚片均由回收的家庭塑料廢品制成，大部分都是由埃因霍溫當地居民收集的。一樓的玻璃外表面是BOL.com的總部整修后剩余的材料，設計周結束后，這些材料將還給該企業用于新辦公室的建造。講臺由借來的混凝土板搭建而成。人民公館內的照明、供暖、吧臺和其他內部裝飾材料也都是借來的。

Photo by Filip Dujardin

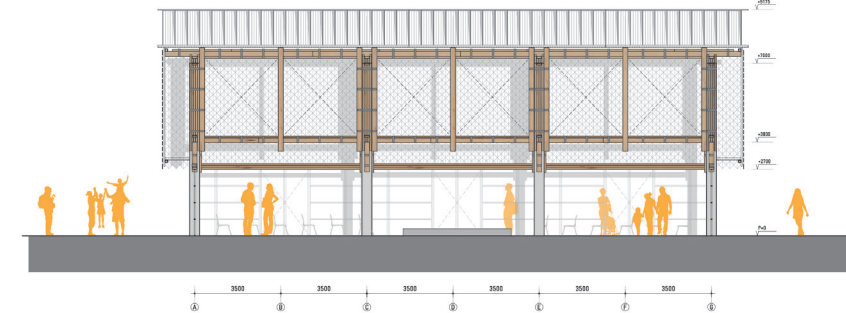


Photo by Filip Dujardin

Photo by Jeroen van der Wielen



剖面AA Section AA



剖面BB Section BB

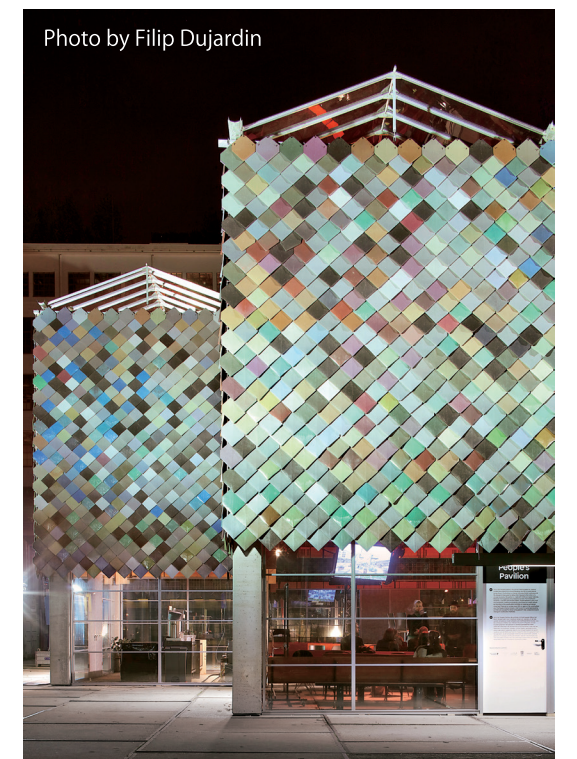
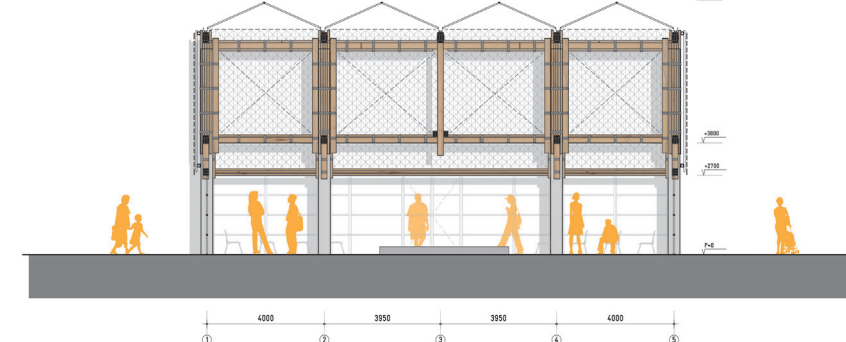


Photo by Filip Dujardin



Photo by Jeroen van der Wielen

Every year in October the Dutch Design Week (DDW) - the largest and most important design event in Northern Europe – takes place in Eindhoven (NL). In 2017 DDW and Design City Eindhoven launched the first edition of the World Design Event (WDE), which provides a platform for future makers from all over the world. And at the heart of Dutch Design Week was the People's Pavilion, a design of bureau SLA & Overtreders W.

The pavilion is a design statement of the new circular economy, a 100% circular building where no building materials were lost in construction. The designers of the bureau SLA and Overtreders W accomplished this with a radical new approach: all of the materials needed to make the 250m² building were borrowed. Not only materials from traditional suppliers and producers, but

also from Eindhoven residents themselves. And to be clear, it's not 70% or 80% or even 95%, but 100% of the materials: concrete and wooden beams, lighting, facade elements, recycled plastic cladding, even the Pavilion's glass roof, all of which were returned completely unharmed - with one special exception - to the owners following the DDW. The exception? The striking colored tiles that made up the Pavilion's upper facade, made from plastic household waste materials collected by Eindhoven residents, which were distributed among those very residents at the end of DDW.

100% borrowed means a construction site without screws, glue, drills or saws. This, in turn, leads to a new design language: the People's Pavilion reveals a new future for sustainable building: a powerful design with new collaborations and intelligent construction methods.

Program

The People's Pavilion was the main pavilion of the World Design Event. It was used as a meeting place and hang-out for visitors and served as a venue for music and theater. The Pavilion was programmed for two weeks during the days and evenings with events like the Age of



Photo by Jeroen van der Wielen

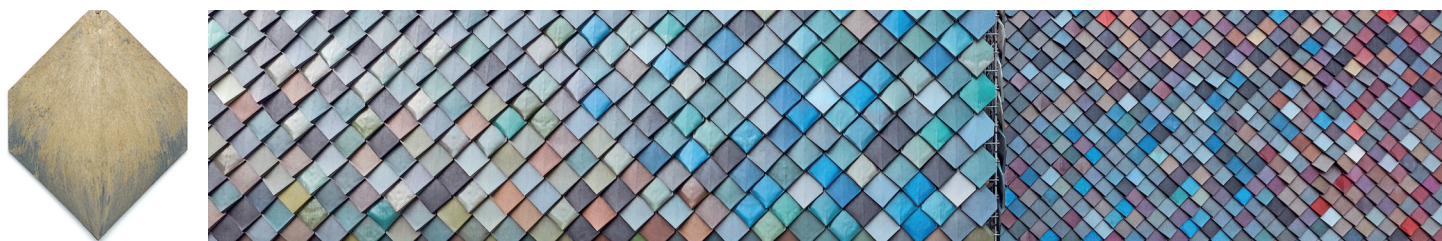


Photo by Jeroen van der Wielen

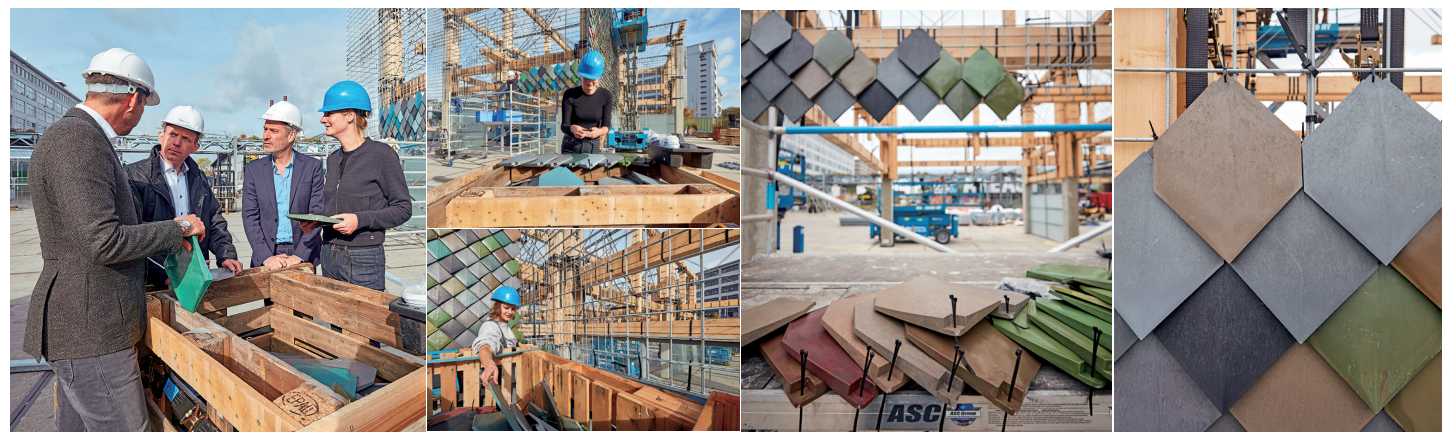


Photo by Jeroen van der Wielen

一樓平面圖 Ground Floor Plan

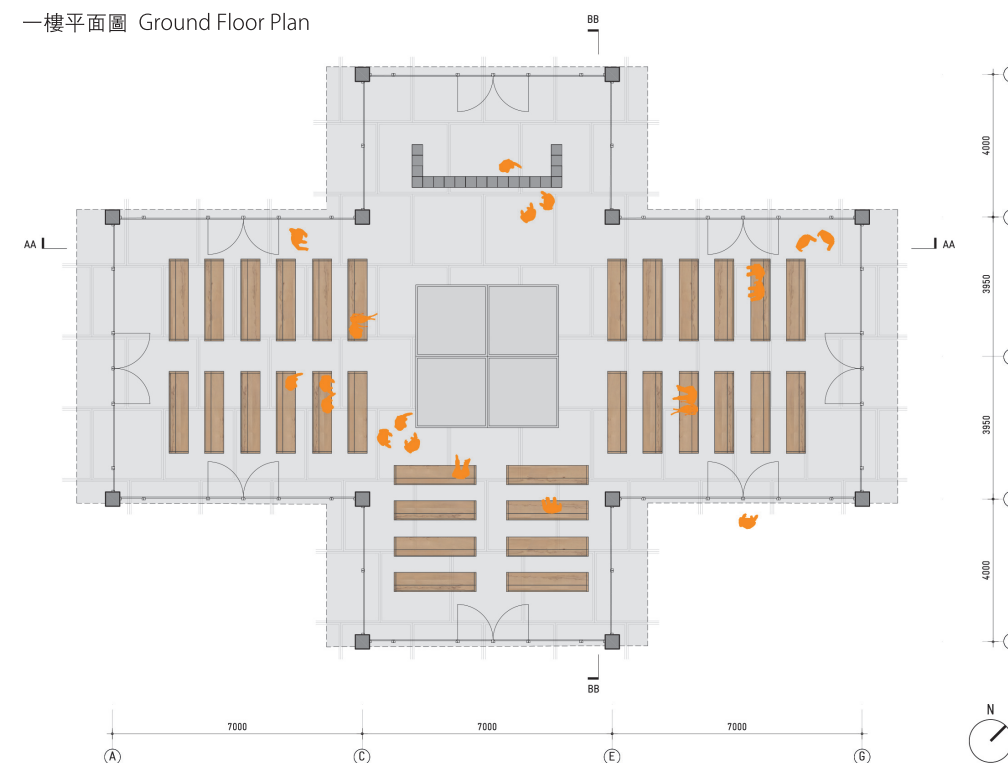


Photo by Jeroen van der Wielen



Photo by Jeroen van der Wielen

Wonderland, a TEDx try-out, the Making of Your World readings, and a Climate Action debate. The Pavilion could accommodate 200 seated or 600 people standing and is open to all: one didn't need a ticket to enter.

Design Outline

The base for the People's Pavilion was a construction of 12 concrete foundation piles and 19 wooden frames, designed in collaboration with Arup. The frames consisted of unplanned wooden beams of standard dimensions, held together with steel straps. Concrete piles and

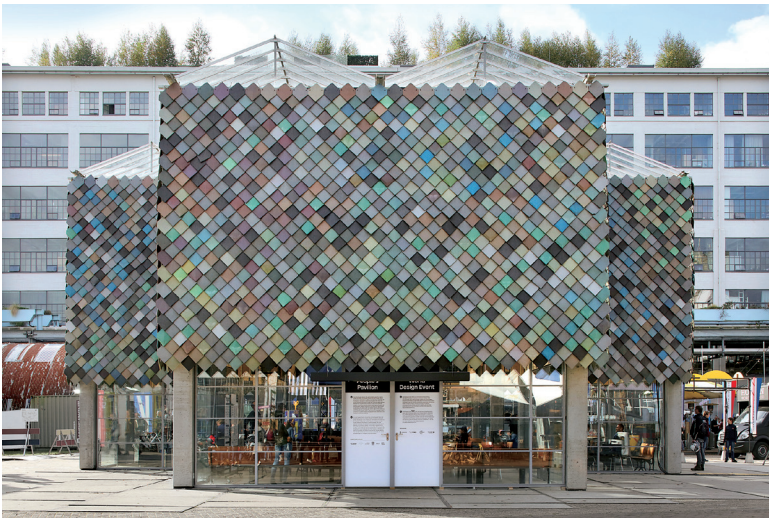
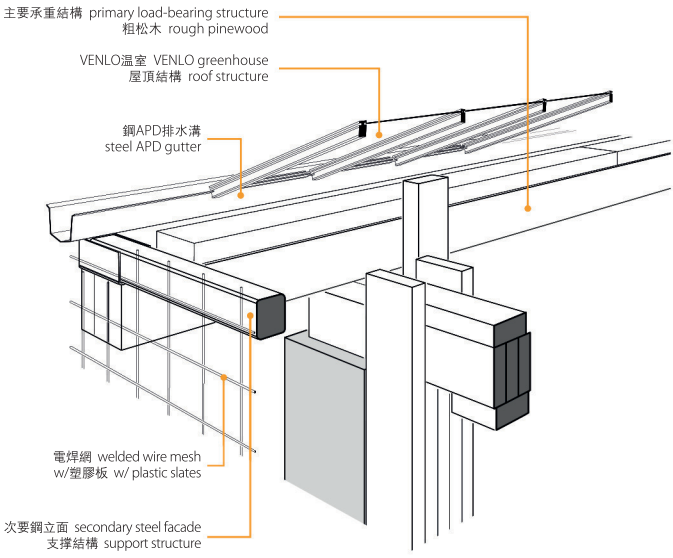
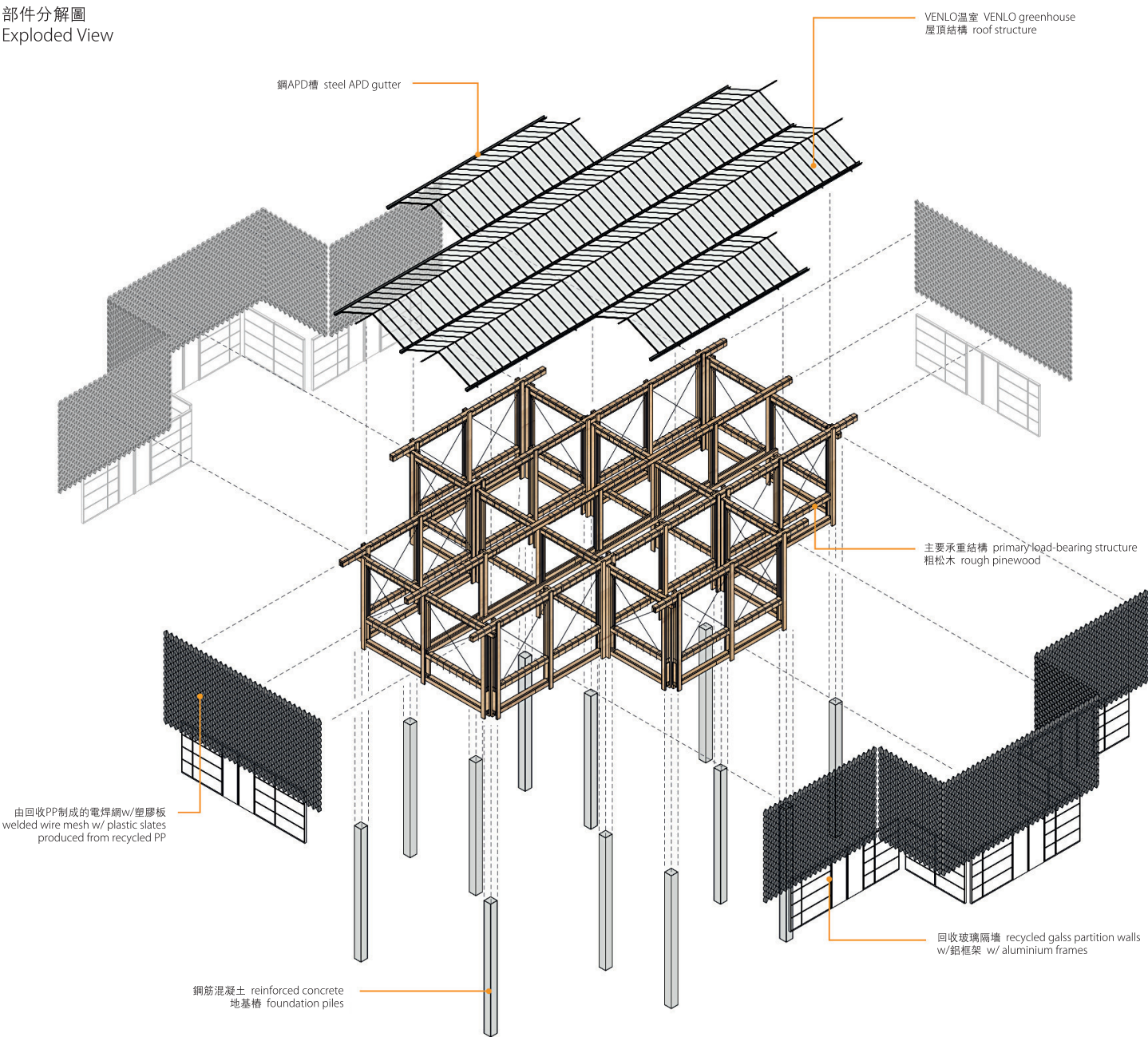
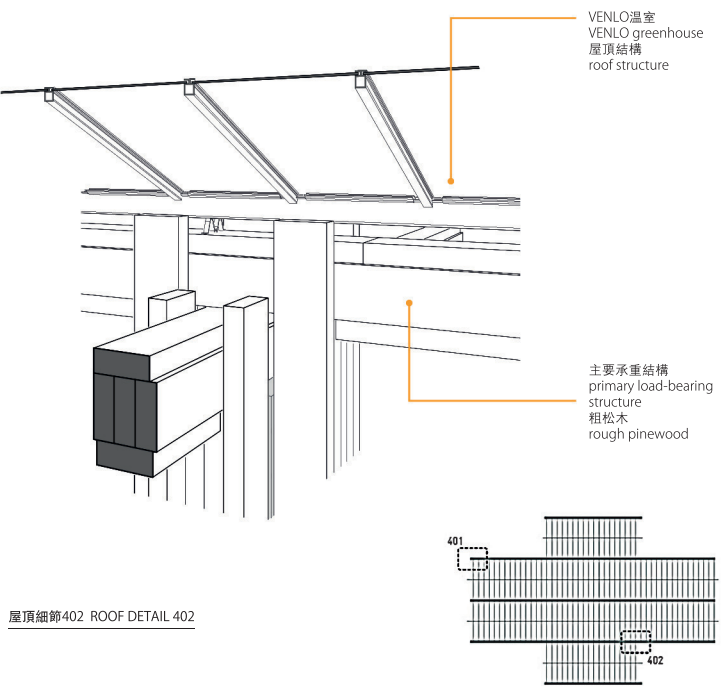


Photo by Jeroen van der Wielen

部件分解圖
Exploded View



屋頂細節401 ROOF DETAIL 401



屋頂細節402 ROOF DETAIL 402

主要結構細節圖 Primary Construction Details

frames were connected with 350 tensioning straps, creating an eight meter high primary structure for the 250m² building. The glass roof was made using a system that is commonly employed in the greenhouse industry. The Pavilion's upper facade consisted of colored plastic tiles was made of recycled plastic household waste, collected largely by Eindhoven inhabitants. The glass facade on the ground floor was a leftover from a refurbishment of BOL.com's headquarters and was to be used for a new office space after the DDW. The podium consisted of borrowed concrete slabs. The lighting, heating, bar and other interior elements of the People's Pavilion were also borrowed.

Credits:

Name: People's Pavilion
Address: Ketelhuisplein Eindhoven
Event: Part of the World Design Event, 21-29 Oct 2017
Design: Bureau SLA & Overtreders W, Amsterdam
Designers: Hester van Dijk, Peter van Assche, Reinder Bakker
Client: Dutch Design Foundation, Eindhoven
Structural Engineering: Arup, Amsterdam
Urban Mining Advice: New Horizon
Main Builders: Ham & Sybesma, Amsterdam
3D Images: Vingtix 3D Visualisation Studio
Photography: Jeroen van der Wielen & Filip Dujardin



Photo by Jeroen van der Wielen



Photo by Jeroen van der Wielen